

PARTS MANUAL

T4550-QB



Front-End Loader

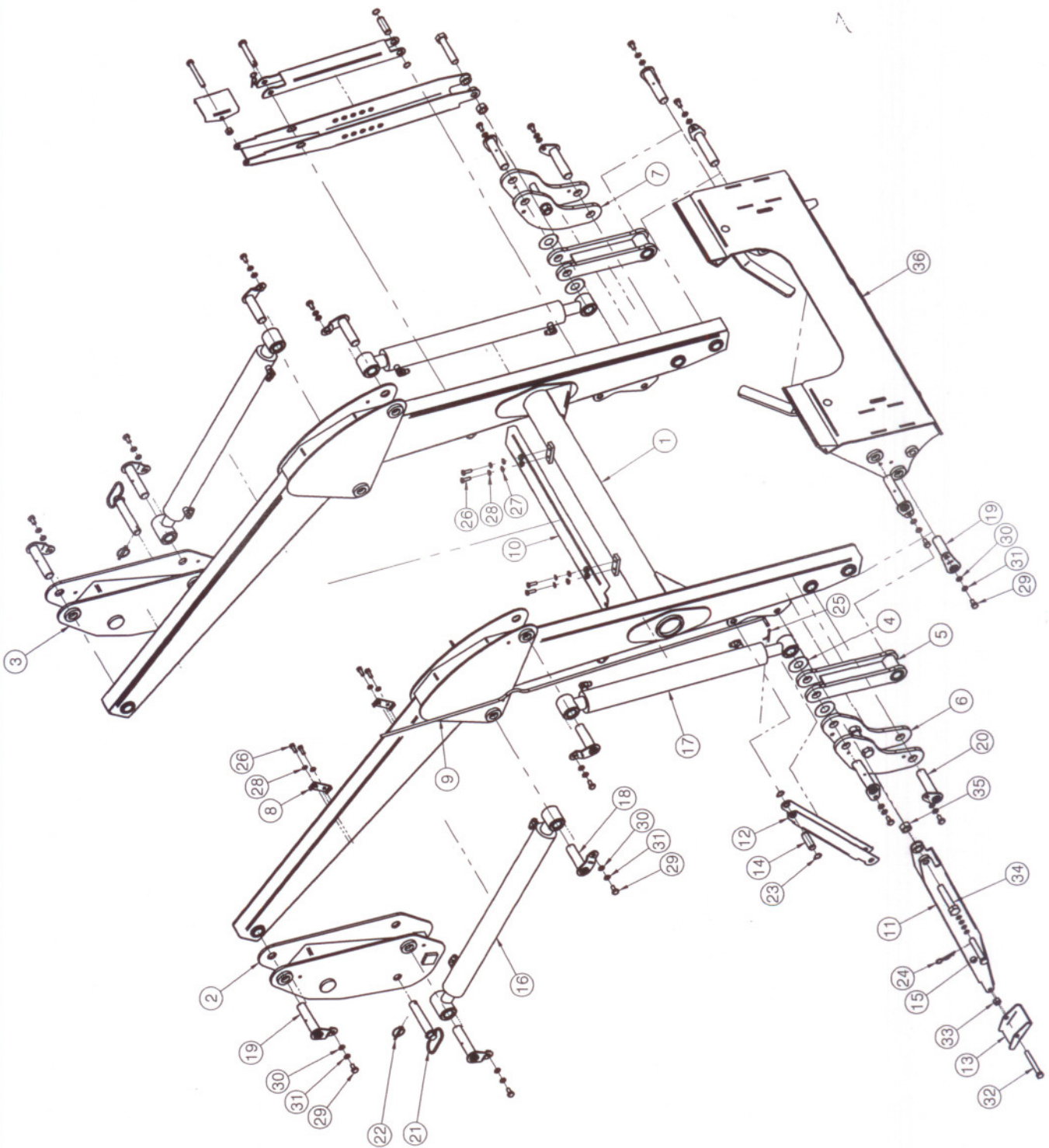
M08011
Printed 2008, 06, 20

Table of Contents

(TT50A-QB)

Boom Assembly -----	2
Coupler Assembly -----	4
Mounting Kits Assembly -----	6
Bucket Assembly -----	8
Hydraulic Parts -----	10
Cylinder -----	12
Decal & Manual -----	14

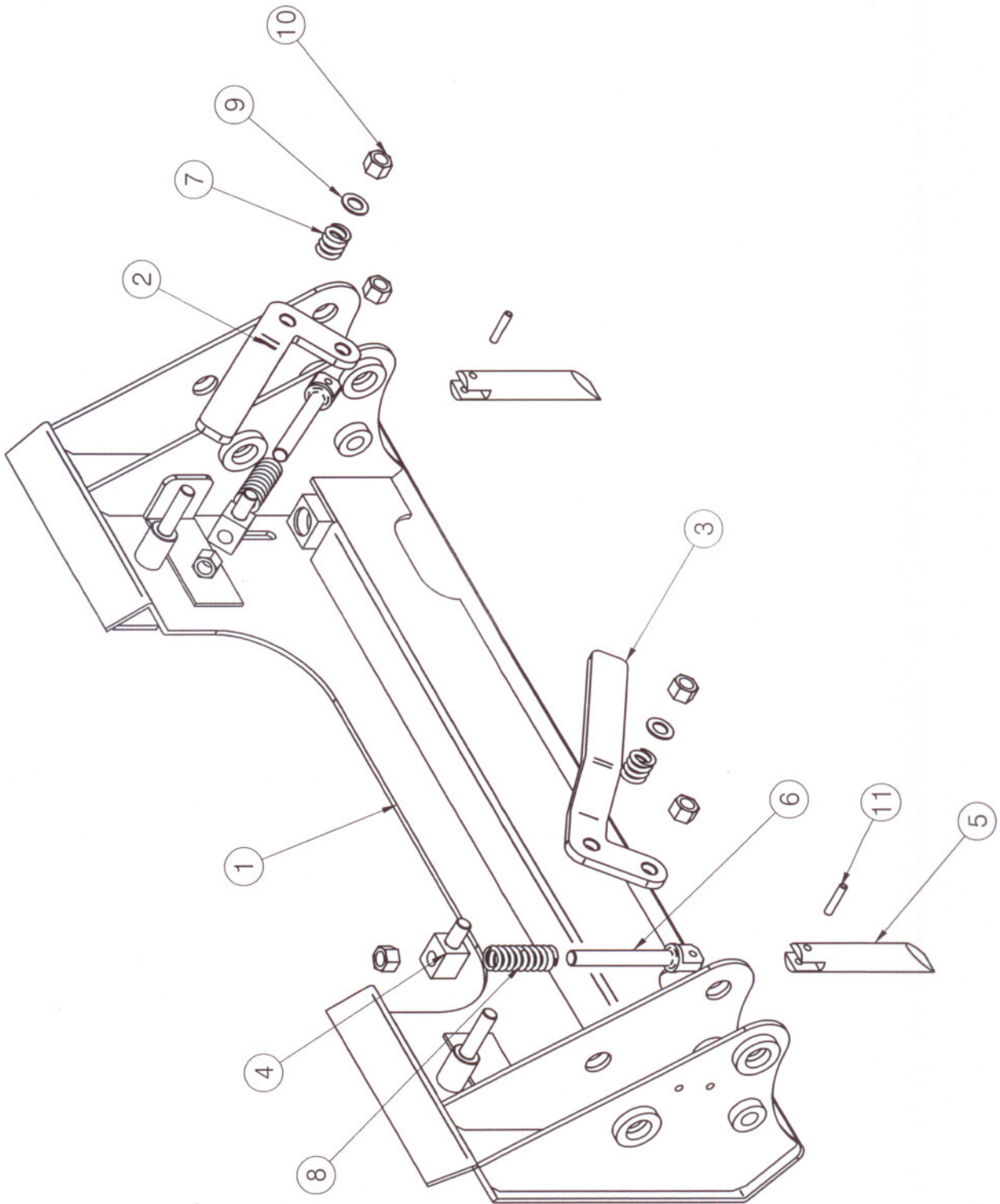
BOOM



BOOM

NO.	Part Number	Part Name	Description	Q'ty	REMARK
1	2150A-0000	BOOM		1	
2	2050A-3100	COLUMN RH.		1	
3	2050A-3200	COLUMN LH.		1	
4	2050A-4010	SHIM	1.6t	4	
5	2150A-4100	ROD BUCKET		2	
6	2050A-4300	BUCKET LINK RH.		1	
7	2050A-4400	BUCKET LINK LH.		1	
8	ALN 47-07-3100	COVER	4t	2	
9	ALK 40-09-310A	INDICATOR	Ø8	1	
10	5570C-7010	COVER	2.3t	1	
11	S7085A-8100	STAND		2	
12	S7085A-8200	LINK-STD	4t	2	
13	S7085A-8400	SUPPORTER	4t	2	
14	S7085A-8520	PIN	Ø20	2	
15	S7085A-8530	PIN	Ø16x100L	2	
16	2150A-8000	CYLINDER-BOOM		2	
17	2150A-9000	CYLINDER-BUCKET		2	
18	P28A-100A	PIN	Ø28	4	
19	P28A-125A	PIN		8	
20	P28B-115A	PIN		4	
21	P25C-1230	PIN-LEVER		2	
22	AL 20-98-9990	LINK PIN		2	
23	SN20M	SNAP RING	Ø20	4	
24	PR30045	R-PIN	ø3	2	
25	PD03025	SPLIT PIN	ø3x25L	1	
26	BH0855125X	BOLT	M8x25L	8	
27	WP08M	PLAIN WASHER	M8	4	
28	WS08M	SPRING WASHER	M8	8	
29	BH1044150Z	BOLT(10.9T)	M10x20L	16	
30	WP10M	PLAIN WASHER	M10	16	
31	WS10M	SPRING WASHER	M10	16	
32	BH12K7175Z	BOLT(10.9T)	M12x100L	2	
33	NL12175Z	LOCK NUT	M12	2	
34	BH20K5250X	BOLT(10.9T)	M20x100L	2	
35	NL20250Z	LOCK NUT	M20	2	
36	B1000B-000B	COUPLER B/C		1	

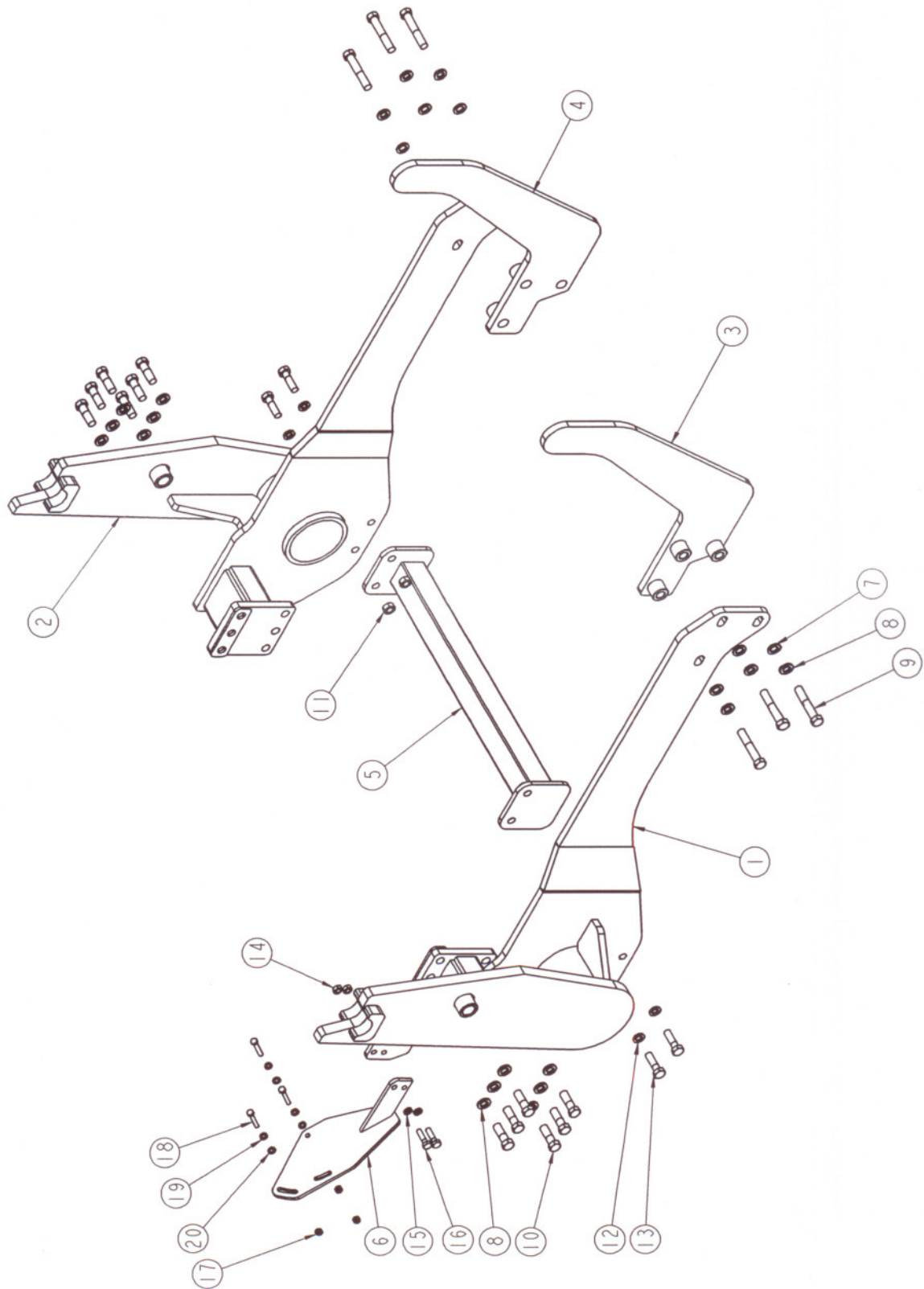
COUPLER



COUPLER

NO.	Part Number	Part Name	Description	Q'ty	REMARK
1	B1000B-200B	COUPLER B/C		1	
2	B0945A-1110	LEVER RH.	10t	1	
3	B0945A-1120	LEVER LH.	10t	1	
4	B0945A-1210	PIN	30x30	2	
5	B0945A-1220	PIN	Ø30	2	
6	B0945A-1230	PIN	Ø30	2	
7	B0945A-1310	SPRING	Ø5	2	
8	B0945A-1320	SPRING	Ø4.5	2	
9	WP16M	PLAIN WASHER	M16	2	
10	NL16200Z	LOCK NUT	M16	6	
11	PS08040	SPRING PIN	Ø8x40L	2	

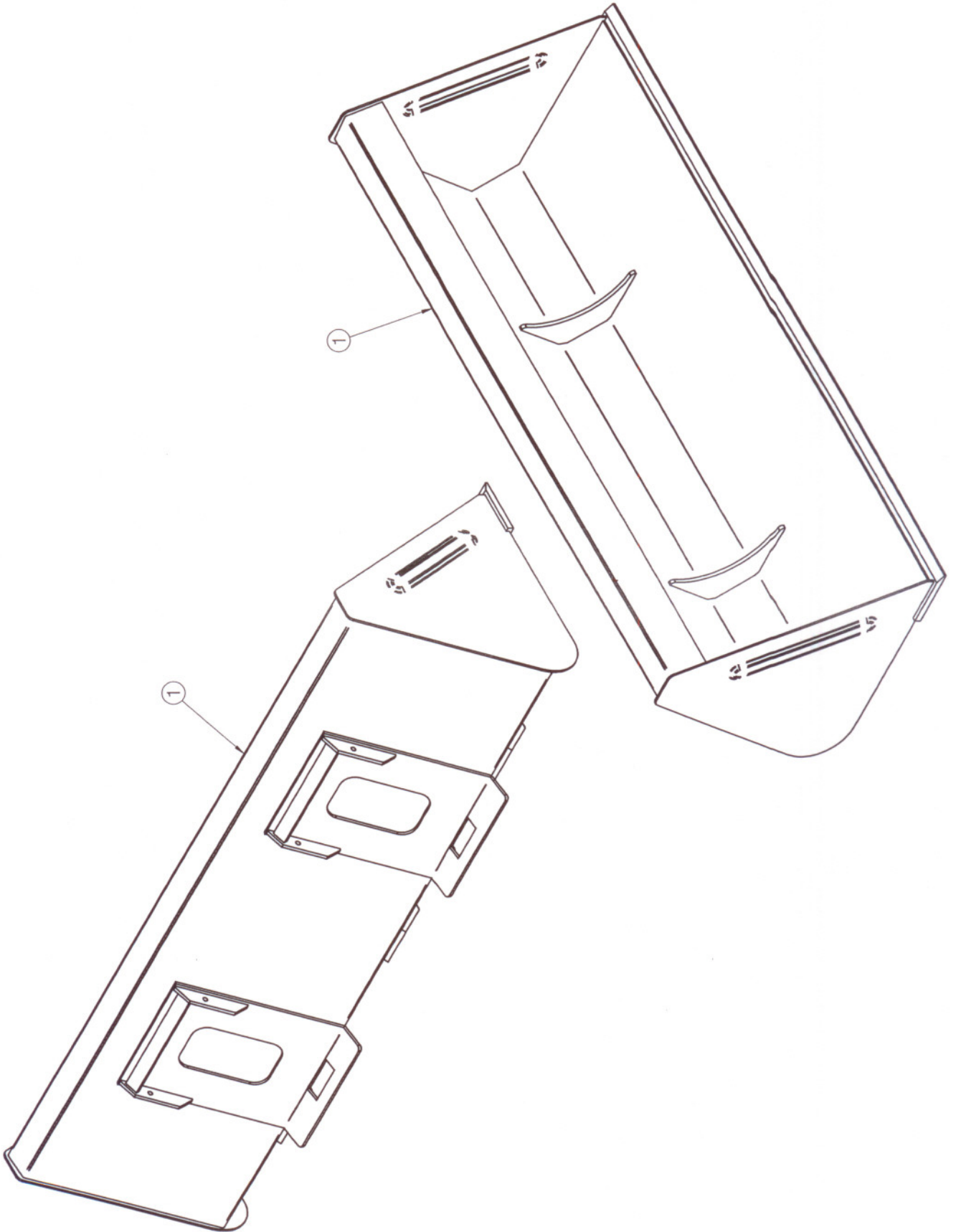
MOUNTING KIT ASSY



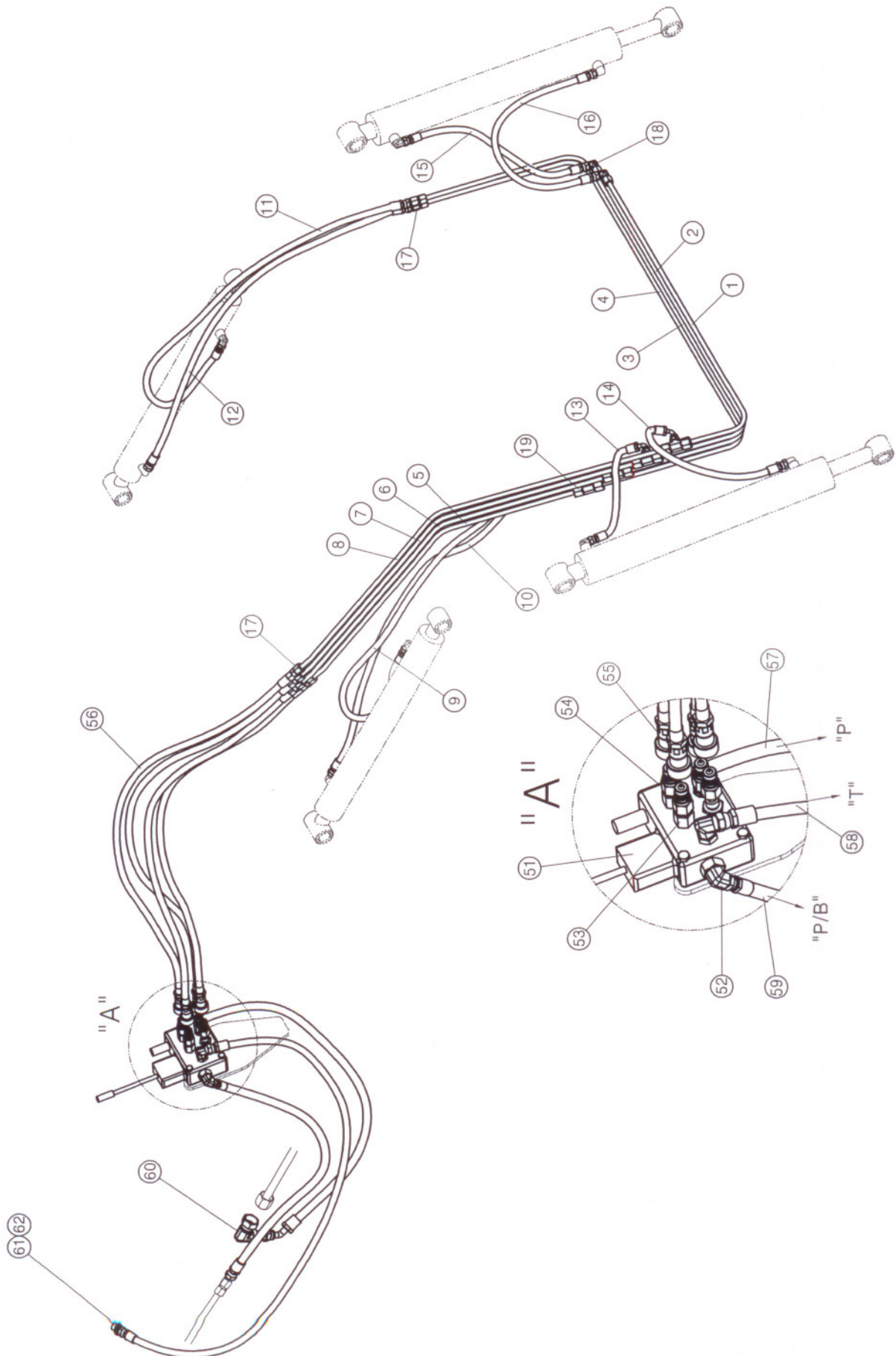
MOUNTING KIT ASSY

NO.	PART NUMBER	PART NAME	DESCRIPTION	Q'TY	REMARK
1	TT50A-1100	SUB FRAME, RH.		1	
2	TT50A-1200	SUB FRAME, LH.		1	
3	TT50A-4100	BUMPER, RH.		1	
4	TT50A-4200	BUMPER, LH.		1	
5	TT50A-6100	UNDER BAR		1	
6	ALK28-09-810C	BRACKET-C/V		1	
7	WP16M	PLAIN WASHER	M16	6	
8	WS16M	SPRING WASHER	M16	18	
9	BH1618150Z	BOLT(10.9T)	M16x90Lx1.5P	6	
10	BH16A6150Z	BOLT(10.9T)	M16x50Lx1.5P	12	
11	NH14200Z	NUT	M14	4	
12	WS14M	SPRING WASHER	M14	4	
13	BH14A7200Z	BOLT(10.9T)	M14x50L	4	
14	NH10150Z	NUT	M10	2	
15	WS10M	SPRING WASHER	M10	2	
16	BH1086150Z	BOLT(10.9T)	M10x40L	2	
17	NH08125Z	NUT	M8	3	
18	BH08AA125Z	BOLT(10.9T)	M8x50L	3	
19	WS08M	SPRING WASHER	M8	3	
20	WP08M	PLAIN WASHER	M8	3	

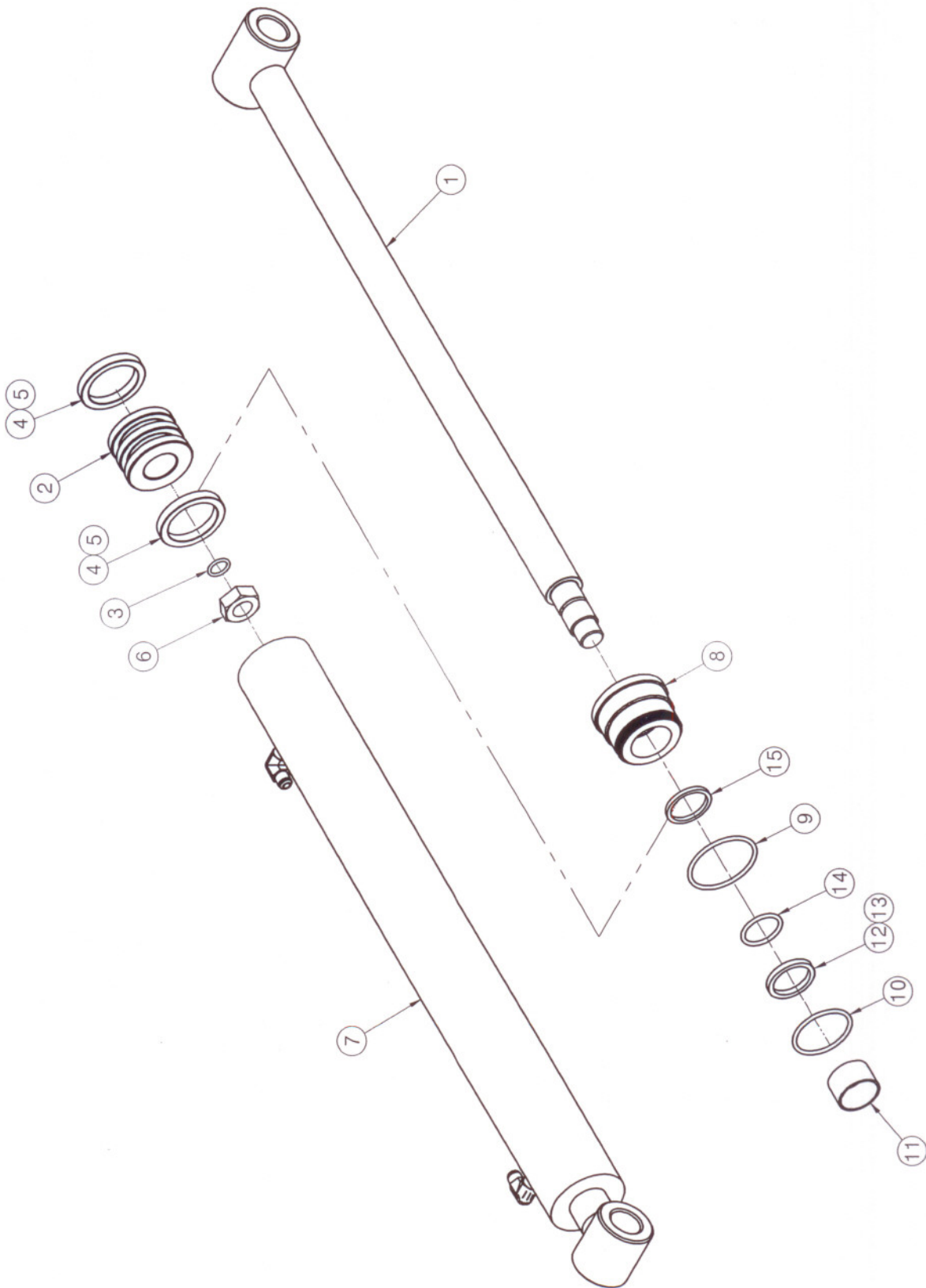
BUCKET



HYDRAULIC PARTS



CYLINDER



CYLINDER

NO.	PART NAME	PART NUMBER		Q'TY	REMARK
		BUCKET	BOOM		
1	ROD	2150A -05-1120	2150A-05-2110	1	
2	PISTON	AL191-05-2120	AL191-05-2120	1	
3	O-RING	1BP21	1BP21	1	
4	U-PACKING	ODI 60x45x9	ODI 60x45x9	2	
5	NUT	AL191-05-1150	AL191-05-1150	1	
6	TUBE	2150A-05-1210	2150A-05-2210	1	
7	COVER ROD	AL191-05-2220	AL191-05-2220	1	
8	O-RING	1BG60	1BG60	1	
9	O-RING	1BP35	1BP35	1	
10	DU BUSH	AL191-05-2250	AL191-05-2250	1	
11	U-PACKING	ISI 35x45x6	ISI 35x45x6	1	
12	BACK UP RING	BRT3 35x45x2	BRT3 35x45x2	1	
13	O-RING	1BP50A	1BP50A	1	
14	DUST SEAL	LBI 35x43x5/6.5	LBI 35x43x5/6.5	1	
	SEAL KIT (Include 3, 4, 8, 9, 11, 12, 13, 14)	SEAL 6035	SEAL 6035		

DECAL & MANUAL

