

PARTS MANUAL

4505-QB

NEWHOLLAND WorkMaster 45



Front-End Loader

M10012

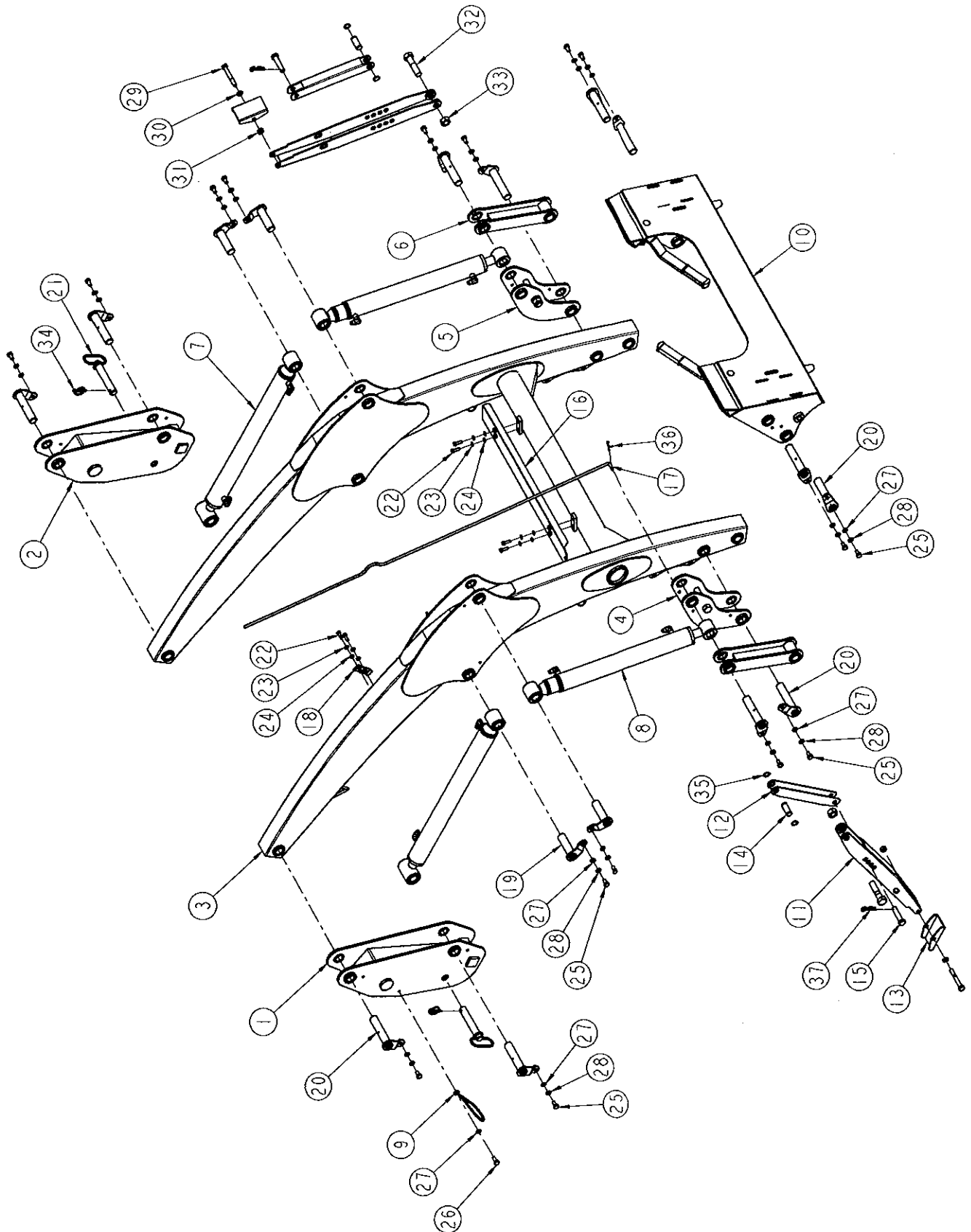
Printed 2010, 11, 11

Table of Contents

(4505-QB)

Boom Assembly -----	2
Coupler Assembly -----	4
Bucket Assembly -----	6
Mounting Kit Assembly -----	8
Cylinder Assembly -----	10
Hydraulic Parts -----	12
Decal & Manual -----	14

BOOM ASSEMBLY

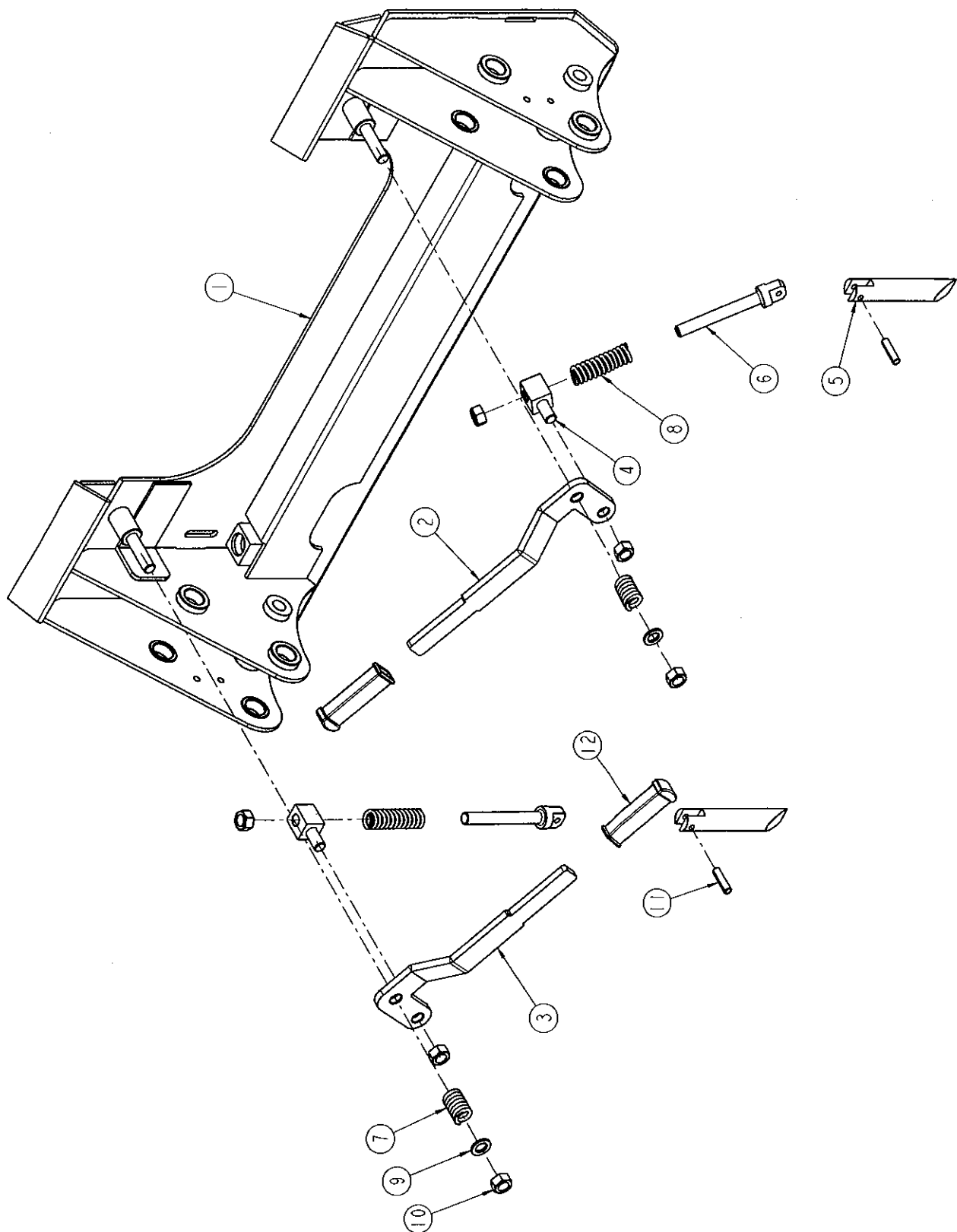


BOOM ASSEMBLY

(P/N:C2050)

NO.	PART NUMBER	PART NAME	DESCRIPTION	Q'TY	REMARK
1	C2050-3100	COLUMN-RH.		1	
2	C2050-3200	COLUMN-LH.		1	
3	C2050-0000	BOOM ASSY		1	
4	C2050-6000	LINK BUCKET RH.		1	
5	C2050-7000	LINK BUCKET LH.		1	
6	C2050-4100	BUCKET ROD		2	
7	C2050-8000	BOOM CYLINDER		2	
8	C2050-9000	BUCKET CYLINDER		2	
9	C2050-9500	HOLDER	Ø 5	1	
10	B1000B-000G	COUPLER B/C		1	
11	4060A-8100	STAND		2	
12	4060A-8200	BRACKET	4t	2	
13	4060A-8400	BRACKET	4t	2	
14	4060A-8520	PIN	Ø 20x48L	2	
15	4060A-8530	PIN	Ø 16x80L	2	
16	5570C-7010	COVER	2.3t	1	
17	7085A-4510	INDICATOR	Ø 8	1	
18	ALN47-07-3100	COVER	4t	1	
19	P28A-100A	PIN		4	
20	P28A-135A	PIN		12	
21	P25C-1230	PIN-LEVER	Ø 25	2	
22	BH0855125X	BOLT(10.9T)	M8x25L	6	
23	WS08M	SPRING WASHER	M8	6	
24	WP08M	PLAIN WASHER	M8	6	
25	BH1044150Z	BOLT(10.9T)	M10x20L	16	
26	BH1055150Z	BOLT(10.9T)	M10x25L	1	
27	WP10M	PLAIN WASHER	M10	16	
28	WS10M	SPRING WASHER	M10	17	
29	BH1216175Z	BOLT(10.9T)	M12x90L	2	
30	WP12M	PLAIN WASHER	M12	2	
31	NL12175Z	LOCK NUT	M12	2	
32	BH20H5250X	BOLT(10.9T)	M20x85L	2	
33	NL20250Z	LOCK NUT	M20	2	
34	AL20-98-9990	LINK PIN		2	
35	SN20M	SNAP RING	Ø 20	4	
36	PD03025	COTTER PIN	Ø 3x25L	1	
37	PR30045	R-PIN	Ø 3	2	

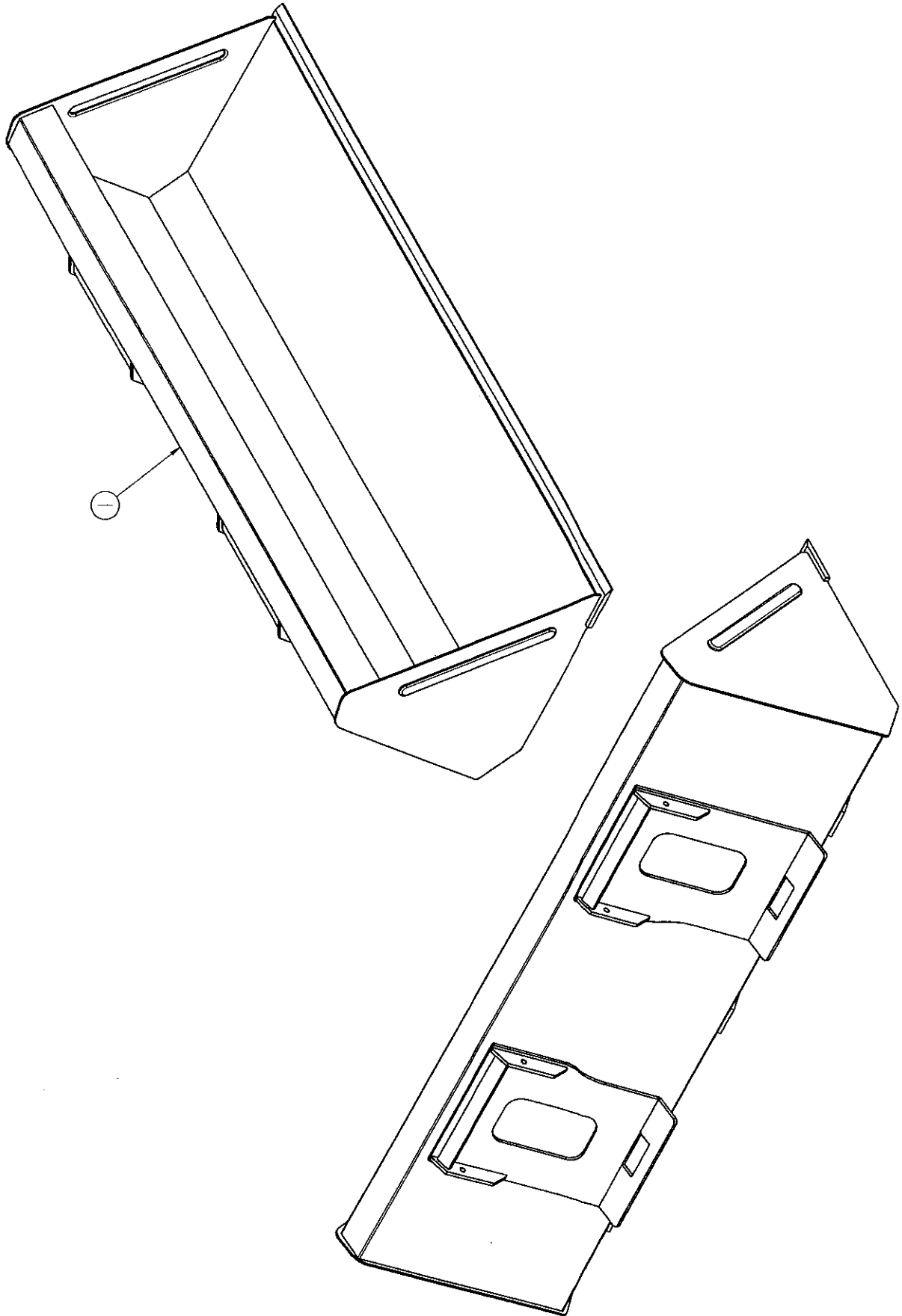
COPUPLER ASSEMBLY



COUPLER ASSEMBLY (P/N:B1000B-000G)

NO.	PART NUMBER	PART NAME	DESCRIPTION	Q'TY	REMARK
1	B1000B-200G	COUPLER B/C		1	
2	B0945A-111A	LEVER RH.	10†	1	
3	B0945A-112A	LEVER LH.	10†	1	
4	B0945A-1210	PIN	30x30	2	
5	B0945A-1220	PIN	∅30	2	
6	B0945A-1230	PIN	∅30	2	
7	B0945A-1310	SPRING	∅5	2	
8	B0945A-1320	SPRING		2	
9	WP16M	PLAIN WASHER	M16	2	
10	NL16200Z	LOCK NUT	M16	6	
11	PS08040	SPRING PIN	∅8x40L	2	
12	B0945A-1130	HANDLE		2	

BUCKET ASSEMBLY

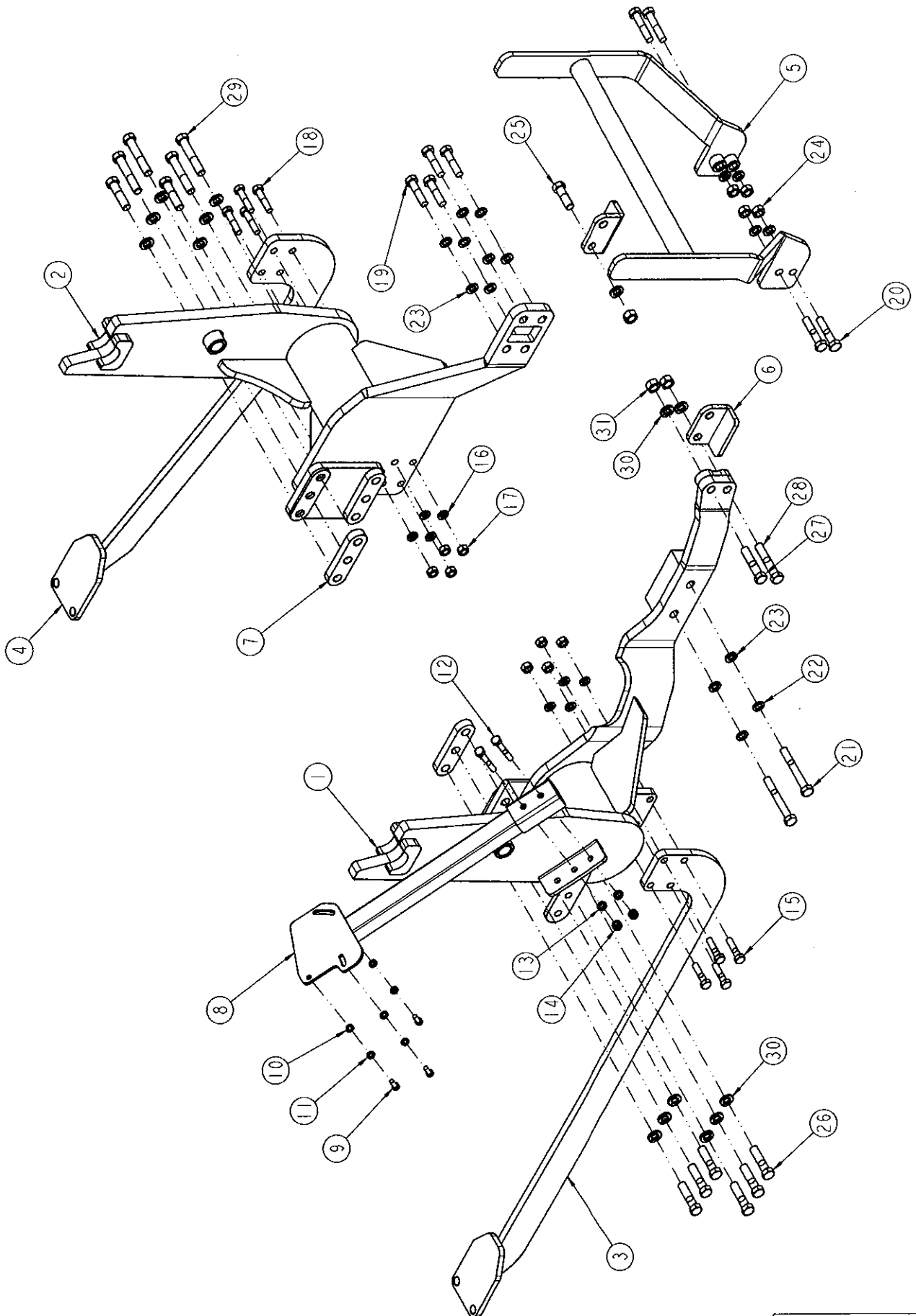


BUCKET ASSEMBLY

(P/N:AKU30-02-000D)

NO.	PART NUMBER	PART NAME	DESCRIPTION	Q'TY	REMARK
1	AKU30-02-000D	BUCKET	L=1830	1	

MOUNTING KIT ASSEMBLY

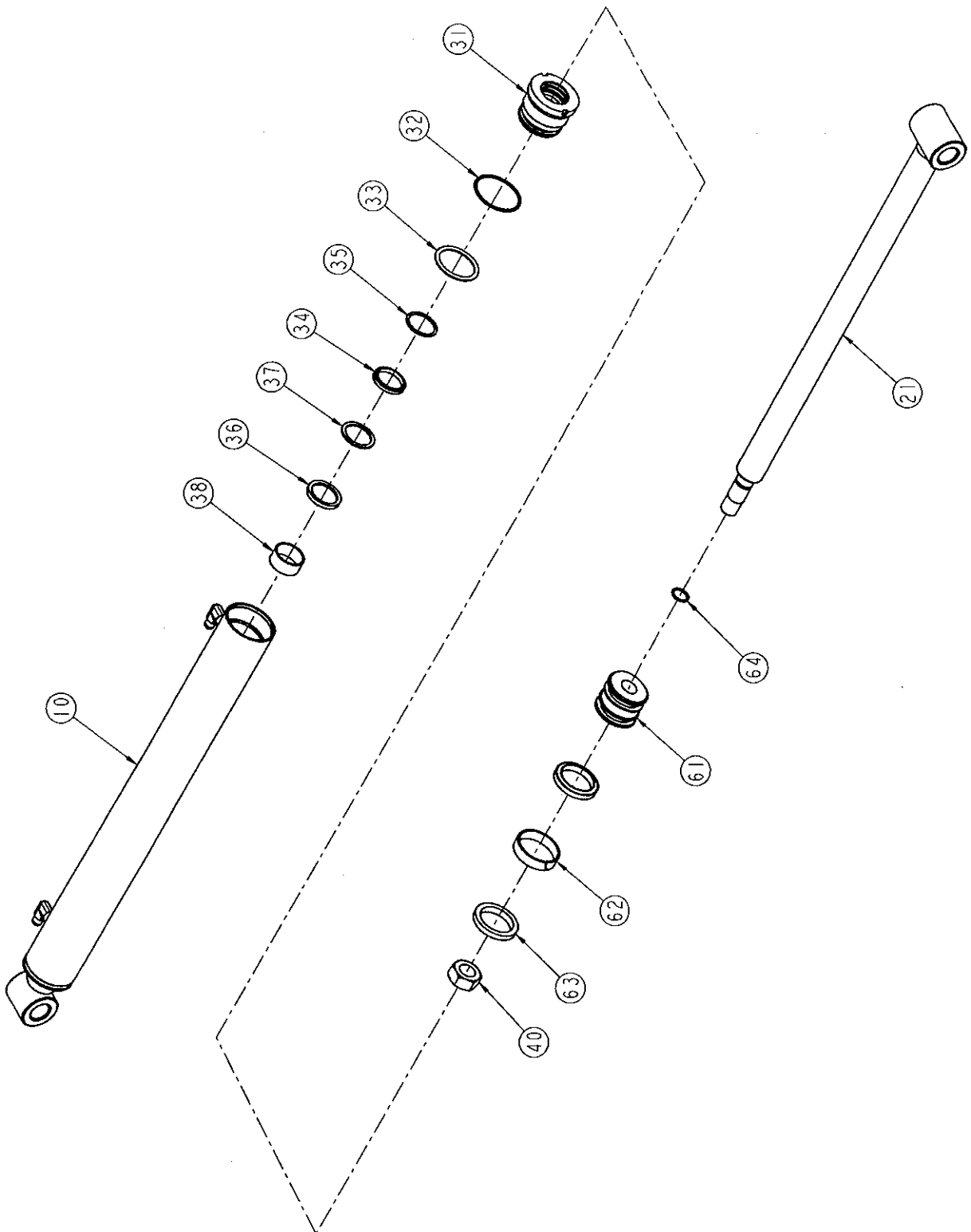


MOUNTING KIT ASSEMBLY

(P/N:WM45A)

NO.	PART NUMBER	PART NAME	DESCRIPTION	Q'TY	REMARK
1	WM45A-1100	SUB FRAME RH.		1	
2	WM45A-1200	SUB FRAME LH.		1	
3	WM45A-3100	BACK AXLE		1	
4	WM45A-3200	BACK AXLE		1	
5	WM45A-4100	BUMPER		1	
6	WM45A-0010	BRACKET	10t	2	
7	WM45A-0020	BRACKET	16t	2	
8	WM45A-8100	VALVE BRACKET	Prince Valve 8	1	
9	BH5164101Z	BOLT(10.9T)	5/16-18UNCx20L	3	
10	WS08-UNC	SPRING WASHER	5/16	3	
11	WP08-UNC	PLAIN WASHER	5/16	3	
12	BH10F6150Z	BOLT(10.9T)	M10x75L	2	
13	WS10M	SPRING WASHER	M10	2	
14	NH10150Z	NUT	M10	2	
15	BH12A6175Z	BOLT(10.9T)	M12x50L	4	
16	WS12M	SPRING WASHER	M12	8	
17	NH12175Z	NUT	M12	8	
18	BH12B6175Z	BOLT(10.9T)	M12x55L	4	
19	BH14C7150Z	BOLT(10.9T)	M14x60Lx1.5P	4	
20	BH14E7200Z	BOLT(10.9T)	M14x70L	4	
21	BH14M7150Z	BOLT(10.9T)	M14x110Lx1.5P	2	
22	WP14M	PLAIN WASHER	M14	6	
23	WS14M	SPRING WASHER	M14	10	
24	NH14200Z	NUT	M14	4	
25	BH16A6200Z	BOLT(10.9T)	M16x50L	1	
26	BH16D82150Z	BOLT(10.9T)	M16x65x1.5P	8	
27	BH16F820Z	BOLT(10.9T)	M16x75L	1	
28	BH16H8200Z	BOLT(10.9T)	M16x85L	1	
29	BH16I8150Z	BOLT(10.9T)	M16x90Lx1.5P	4	
30	WS16M	SPRING WASHER	M16	15	
31	NH16200Z	NUT	M16	3	

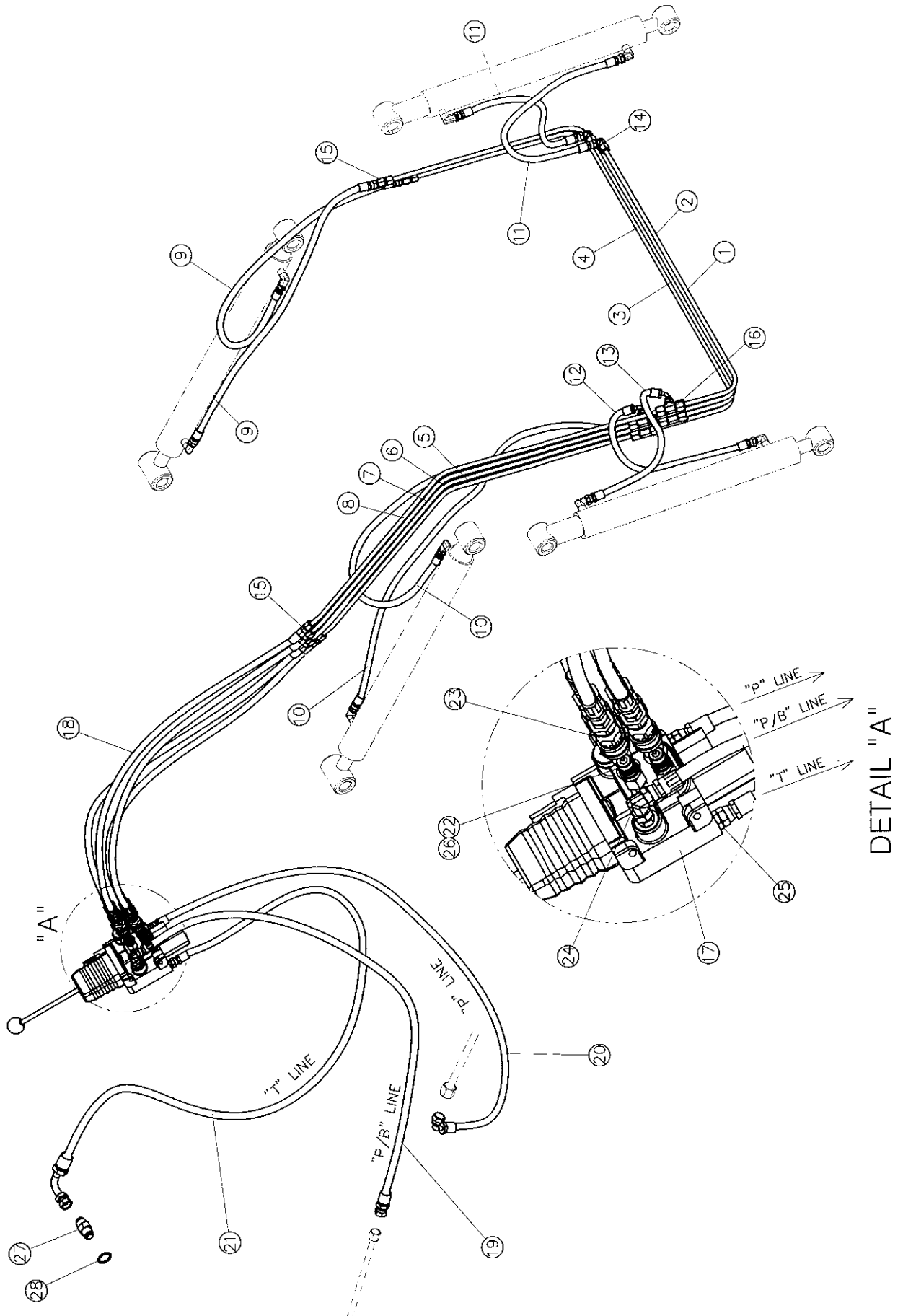
CYLINDER ASSEMBLY



CYLINDER ASSEMBLY

NO.	PART NAME	PART NUMBER		Q'TY	REMARK
		BUCKET (C2050-9000)	BOOM (C2050-8000)		
10	TUBE	C2050-05-1210	C2050-05-2210	1	
21	ROD	C2050-05-1210	C2050-05-2210	1	
31	COVER ROD	CR5530	CR5530	1	
32	O-RING	1BG55	1BG55	1	
33	O-RING	1BP49	1BP49	1	
34	DUST SEAL	LBW 30x38x5/6.5	LBW 30x38x5/6.5	1	
35	O-RING	1BP30	1BP30	1	
36	U-PACKING	ISW 30x40x6	ISW 30x40x6	1	
37	BACK UP RING	BRWW 30x40x2	BRWW 30x40x2	1	
38	DU BUSH	DU3020	DU3020	1	
40	NUT	CY-M20	CY-M20	1	
61	PISTON	PI5530-W	PI5530-W	1	
62	WEAR-RING	WRW 55x50x15	WRW 55x50x15	1	
63	U-PACKING	ODW 55x40x10	ODW 55x40x10	2	
64	O-RING	1BP18	1BP18	1	
	SEAL KIT (Include 32,33, 34,35,36,37,63,64)	SEAL 5530	SEAL 5530	1	

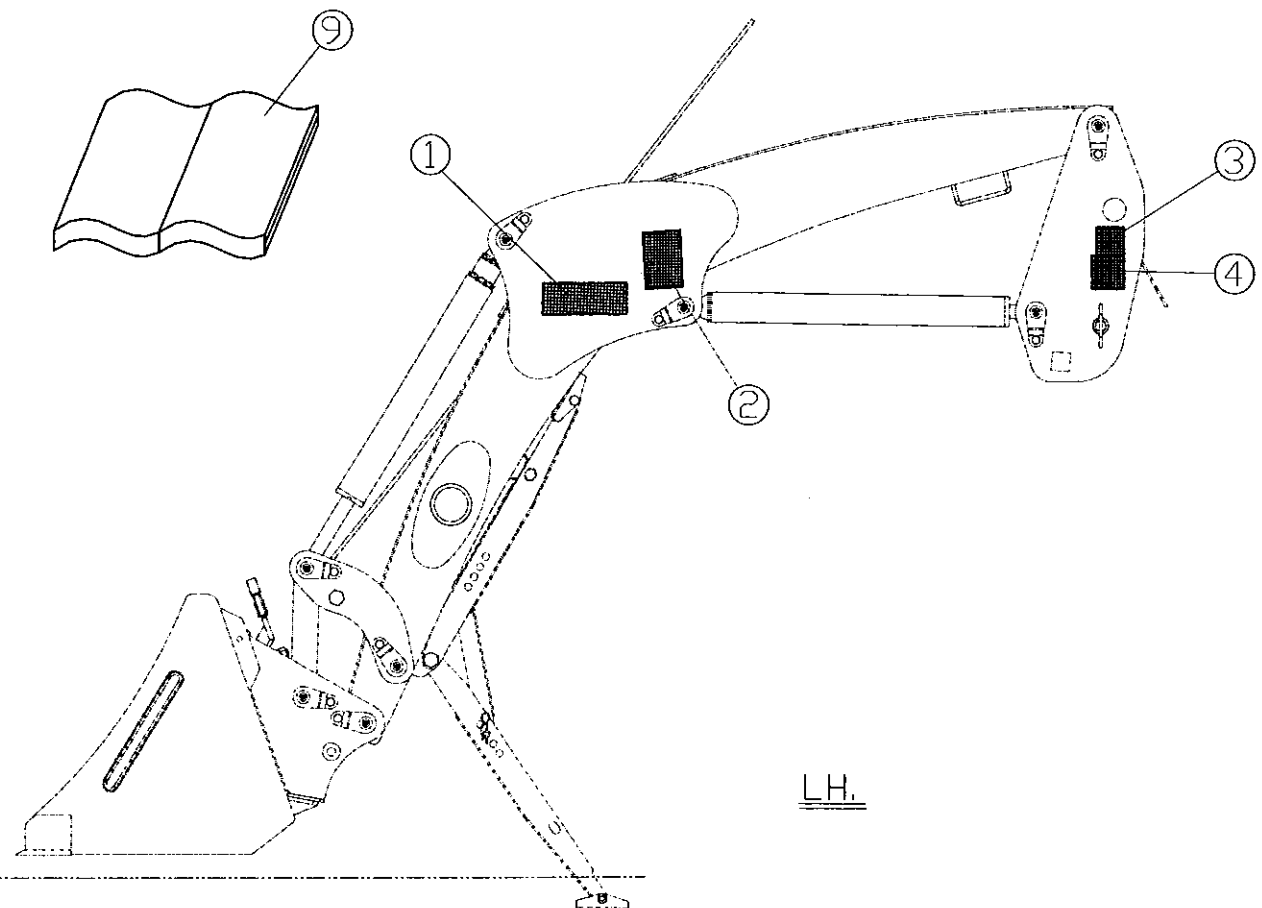
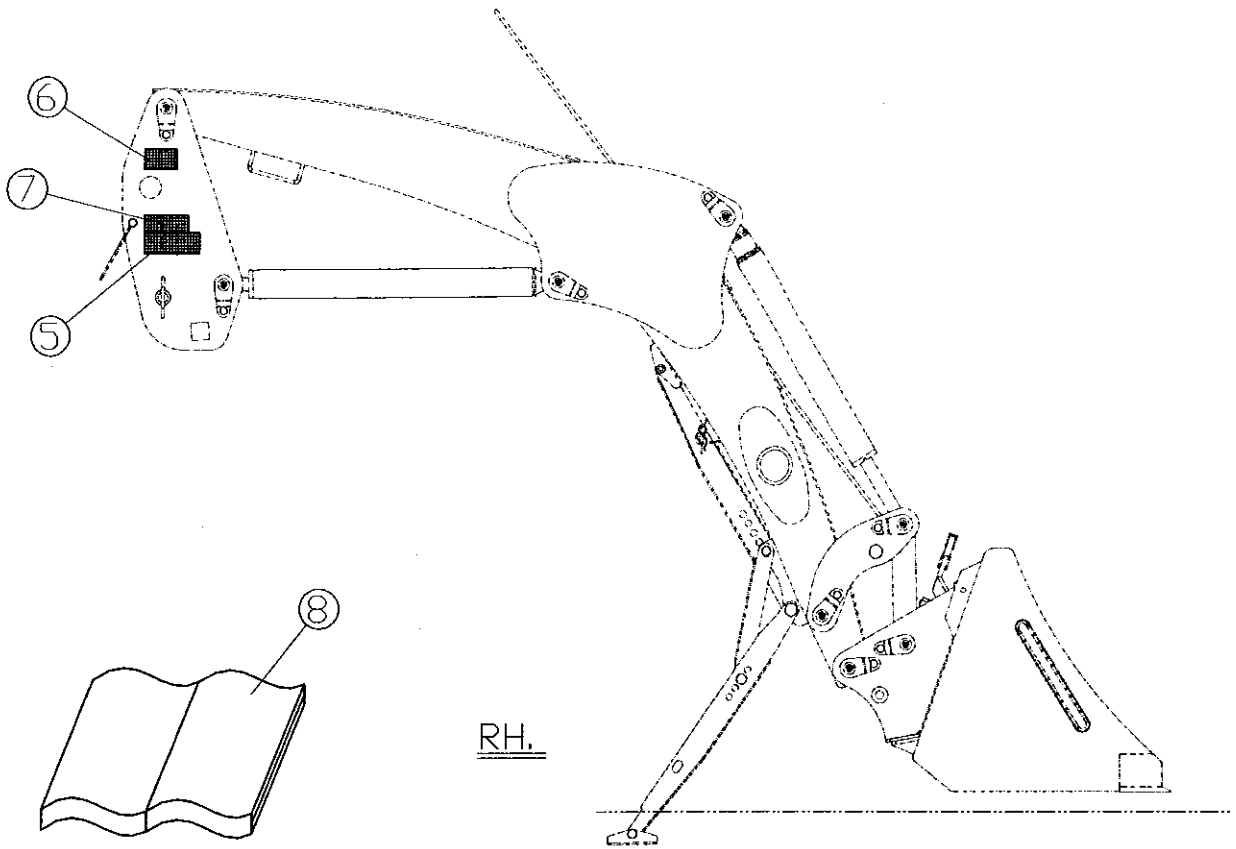
HYDRAULIC PARTS



HYDRAULIC PARTS

NO.	PART NAME	PART NUMBER	Q'TY	REMARK
1	PIPE	C2050-07-1100	1	
2	PIPE	C2050-07-1200	1	
3	PIPE	C2050-07-1300	1	
4	PIPE	C2050-07-1400	1	
5	PIPE	C2050-07-1500	1	
6	PIPE	C2050-07-1600	1	
7	PIPE	C2050-07-1700	1	
8	PIPE	C2050-07-1800	1	
9	HOSE ASS'Y	5PG1-0790	2	BOOM LH.
10	HOSE ASS'Y	5PG1-1150	2	BOOM RH.
11	HOSE ASS'Y	5PG1-0470	2	BUCKET, LH. 上
12	HOSE ASS'Y	5PG1-0350	1	BUCKET, RH. 下
13	HOSE ASS'Y	3P82-0140	1	BUCKET, RH. 上
14	ELBOW NIPPLE	ALK 28-07-9600	2	
15	NIPPLE	ALK 28-07-9800	6	
16	TEE NIPPLE	ALK 28-07-9900	4	
17	CONTROL VALVE	-	1	PRINCE VALVE
18	HOSE ASS'Y	3P81-0680	4	BOOM → VALVE
19	HOSE ASS'Y	1P22-0220	1	P/B LINE
20	HOSE ASS'Y	1P22-0230	1	P LINE
21	HOSE ASS'Y	1P22-0240	1	T LINE
22	Q-COUPLER(M)	ALK28-07-720A	4	
23	Q-COUPLER(F)	ALK28-07-710A	4	
24	ELBOW NIPPLE	M7040-07-7050	1	C/V P/B port
25	O-Ring NIPPLE	7860-07-7080	2	C/V P/T port
26	O-Ring NIPPLE	ALK28-07-781A	4	C/V A, B port
27	NIPPLE	7860-07-7040	1	Tractor T port
28	USIT-RING	464310	1	Tractor T port

DECAL & MANUAL



DECAL & MANUAL

NO.	PART NAME	PART NUMBER	Q'TY	REMARK
1	DECAL	03L01	1	
2	DECAL	03L02	1	
3	DECAL	03L03	1	
4	DECAL	03L04	1	
5	DECAL	03L05	1	
6	DECAL	03L06	1	
7	DECAL	03L00	1	
8	OPERATOR'S MANUAL	M03L01	1	
9	PARTS MANUAL	M10012	1	